

Dell Wireless Docking Station WLD15 User Guide for Windows 10



Notes, cautions, and warnings

 **NOTE:** A NOTE indicates important information that helps you make better use of your computer.

 **CAUTION:** A CAUTION indicates either potential damage to hardware or loss of data and tells you how to avoid the problem.

 **WARNING:** A WARNING indicates a potential for property damage, personal injury, or death.

Copyright © 2015 Dell Inc. All rights reserved. This product is protected by U.S. and international copyright and intellectual property laws. Dell™ and the Dell logo are trademarks of Dell Inc. in the United States and/or other jurisdictions. All other marks and names mentioned herein may be trademarks of their respective companies.

2015 - 10

Rev. A00

Contents

| | |
|--|-----------|
| 1 Introduction | 4 |
| Package Contents | 4 |
| Identifying Parts and Features | 6 |
| Pairing/Connect/Disconnect button..... | 7 |
| Kensington Lock..... | 7 |
| Reset Button..... | 8 |
| Hardware Requirements | 8 |
| 2 Quick Setup of Hardware | 9 |
| 3 LED Status Indicators..... | 12 |
| Power Adapter LED..... | 12 |
| Docking Status Indicator..... | 12 |
| Pairing/Connect/Disconnect Button | 12 |
| Input/Output (I/O) Connectors on the Dell Wireless Docking Station WLD15 | 13 |
| Re-setting the Dell Wireless Docking Station WLD15..... | 14 |
| 4 Connecting to the Intel Wireless Dock Manager..... | 16 |
| 5 Configuring the Intel HD Graphics Utility..... | 24 |
| If connecting two displays, follow these steps:..... | 24 |
| If connecting three displays, follow these steps:..... | 25 |
| 6 Dell Wireless Docking Station Software Update..... | 30 |
| 7 Troubleshooting the Dell Wireless Docking Station WLD15..... | 35 |
| Symptoms and Solutions..... | 35 |
| 8 Technical specifications..... | 38 |
| Product Specifications | 38 |
| Docking Specifications | 38 |
| Display Resolution Table..... | 39 |

Introduction

The Dell Wireless Docking Station WLD15 is a device that links all your electronic devices to your laptop computer with WiGig interface. When you connect the laptop to the docking station, you can gain access to all your peripherals such as mouse, keyboard, stereo speakers, external hard drive, and large-screen displays without having to plug each one into the laptop.

Package Contents

Your docking station ships with the components shown below. Ensure that you have received all the components and contact Dell (see your invoice for contact information) if something is missing.


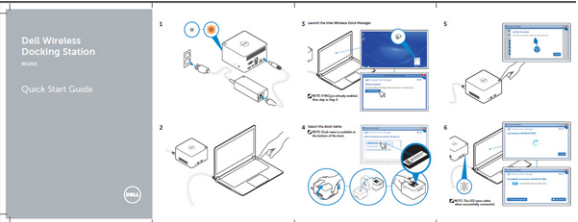
| | |
|---|---|
|  | <p>Wireless Dock Power Adapter Power Cord</p> |
|  | <p>Quick Setup Guide (QSG)</p> |

Table of Contents

SECTION I: GENERAL INFORMATION

SECTION II: REGULATORY INFORMATION

SECTION III: ENVIRONMENTAL INFORMATION

SECTION IV: SAFETY INFORMATION

SECTION V: SUPPLEMENTAL INFORMATION

Safety, Environmental, and Regulatory Information

Identifying Parts and Features

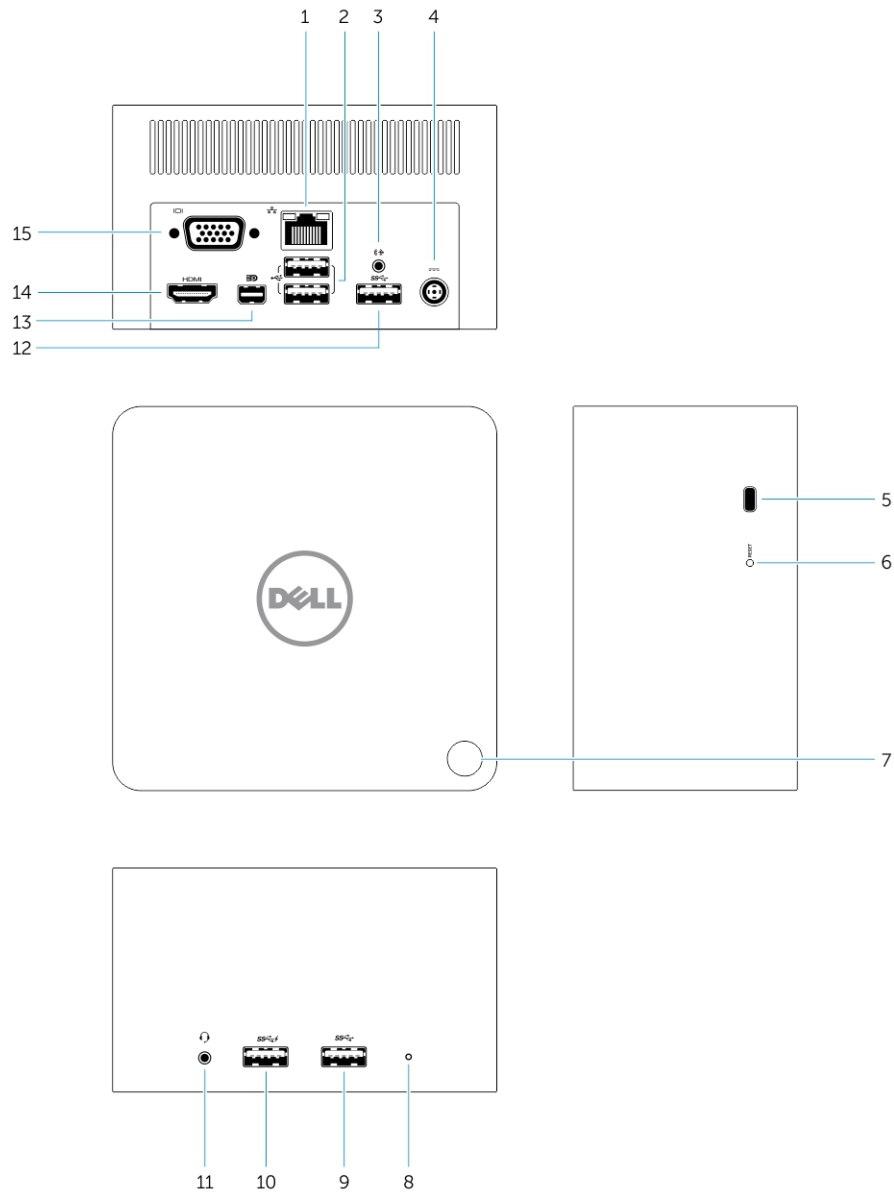


Figure 1. Identifying Parts and Features

1. RJ-45 Port
2. USB 2.0 Ports
3. Speaker out
4. DC-in Connector
5. Kensington lock
6. Reset button

7. Pairing/Connect/Disconnect/Sleep/Wake up button
8. Docking status indicator
9. USB 3.0 connector
10. USB 3.0 connector with PowerShare
11. Headset connector
12. USB 3.0 Port
13. mini Display Port
14. HDMI Port
15. VGA Port

Pairing/Connect/Disconnect button

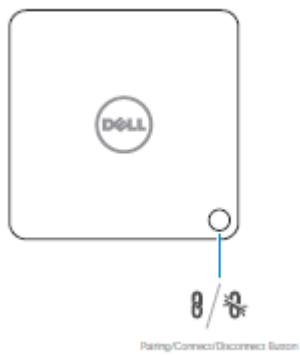


Figure 2. Pairing/Connect/Disconnect button

Kensington Lock

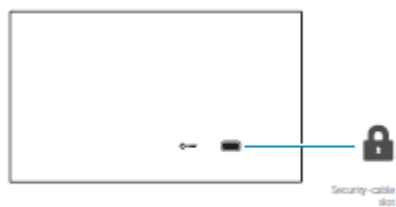


Figure 3. Kensington Lock

Reset Button

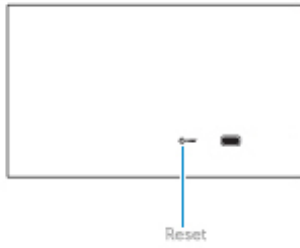


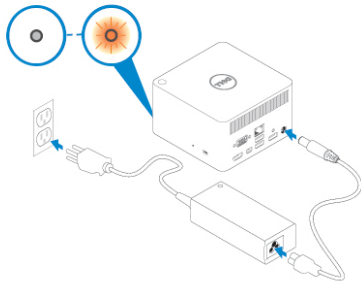
Figure 4. Reset Button

Hardware Requirements

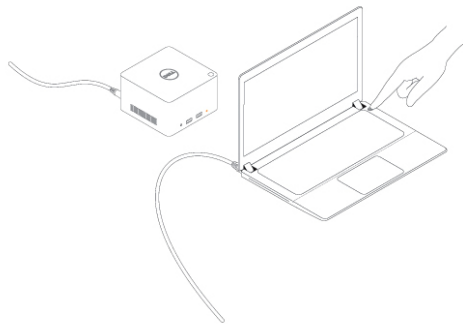
Before using the docking station, ensure that your notebook or PC has a WiGig module and antenna to enable one-to-one wireless connection.

Quick Setup of Hardware

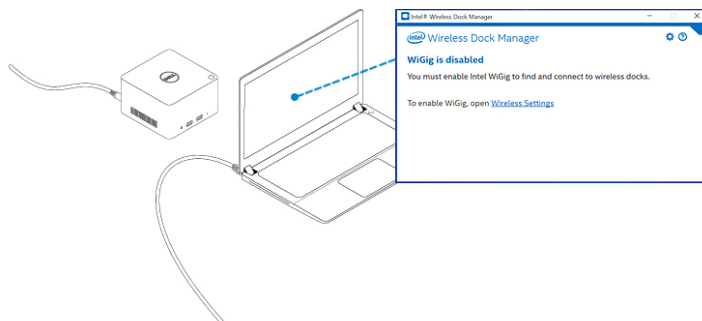
1. Connect the AC adapter to the Dell Wireless Docking Station WLD15 and to the electrical outlet.



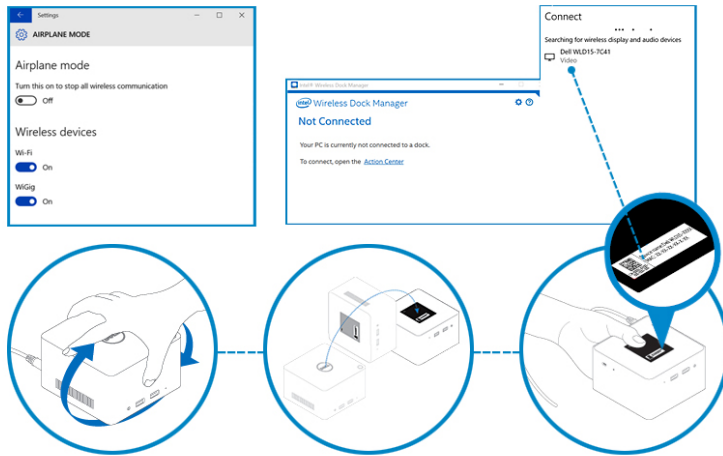
2. Power on the laptop.



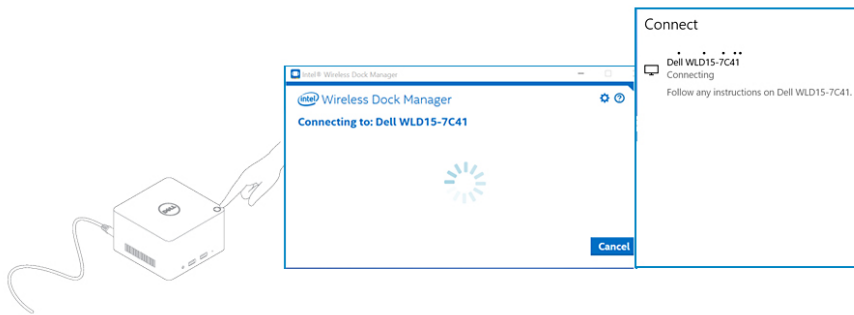
3. Launch the Intel Wireless Dock Manager.



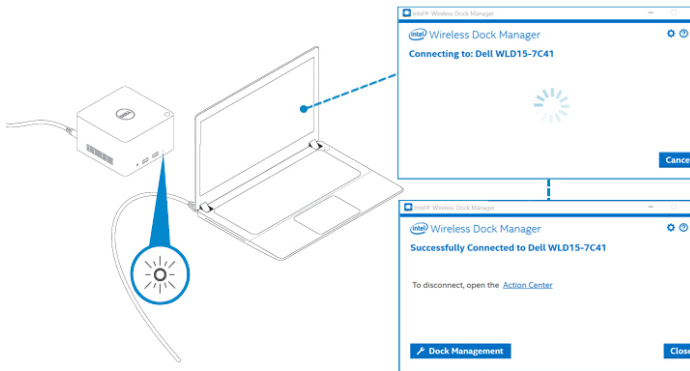
4. Enable the WiGig and then select the dock name.



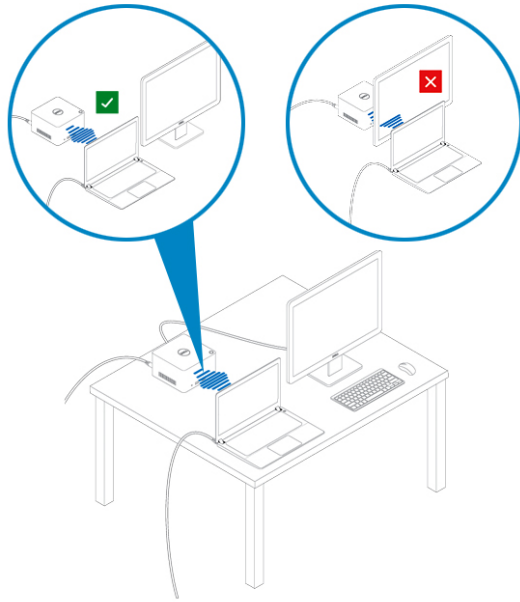
5. Press the Pairing/Connect/Disconnect button and follow the on-screen instructions.



6. Now you are successfully connected to Dell WLD15-7C41.



7. Make sure there is no device placed in between dock station and laptop.



LED Status Indicators

Power Adapter LED

The LED on the power adapter connector illuminates white when power is supplied.

Docking Status Indicator

Table 1. Docking Station LED Indicators




| State | LED Behavior |
|--------------------------|---|
| Disconnected | Solid Amber |
| Connected | Solid White |
| Error (hardware failure) | Amber/White - alternate blinking between white and amber. |
| Pairing/Connecting | Amber - rapid blinking. |
| Firmware Upgrade | Blinking white |

Table 2. RJ-45 LED Indicators

| Link Speed Indicators | Ethernet Activity Indicator |
|-----------------------|-----------------------------|
| 10 Mb = Green | Yellow Flashing |
| 100 Mb = Orange | |
| 1 Gb = Green + Orange | |

Pairing/Connect/Disconnect Button

The Pairing Button is an easy way for the user to pair, connect, and disconnect the docking station to the laptop. It can also be used to 'put to sleep' and 'wake up' the laptop.


| Function | Docking state | Action | Effect |
|---------------------|---|----------------------------------|---|
| Initial pairing | Docking station not connected and not paired. | Short press | Completes pairing and connection to the docking station. |
| Go to sleep | Dock connected | Short press | Puts the laptop in Sleep mode.  NOTE: The laptop's Power Options should be configured to support this function. |
| Disconnect (Undock) | Dock connected | Long press (more than 2 seconds) | Disconnects from docking station.  NOTE: Docking station LED will turn Amber to indicate successful disconnection. |
| Resume from Standby | Dock connected | Short press | Laptop in 'active/wake' mode. |
| Monitor wake up | No docking station in range. | Short press | Activates the monitor.  NOTE: There is no active docking connection in this state. |

Input/Output (I/O) Connectors on the Dell Wireless Docking Station WLD15

The Dell Wireless Docking Station WLD15 has the below I/O connectors:

| | |
|---------------------------|---|
| Video Ports | <ul style="list-style-type: none"> • mini DisplayPort x 1 • HDMI x 1 • VGA x 1 |
| Input/Output Ports | <ul style="list-style-type: none"> • USB 3.0 x 2 • USB 3.0 PowerShare x 1 • USB 2.0 x 2 • Gigabit Ethernet (RJ-45) x 1 • Headset connector x 1 • Line-out connector x 1 |

If the wireless link between the laptop and the Dell Wireless Docking Station becomes weak, move the laptop closer to the Dell Wireless Docking station or rotate the laptop to find a position with a stronger wireless link. For example, if you find that the wireless signal strength is reduced when the laptop lid is closed, you can open the laptop lid to find the best reception.

 **NOTE:** *The wireless connection works best if your laptop lid (logo side) directly faces the front side of the docking station and there is a line-of-sight between the laptop and the docking station.*

Re-setting the Dell Wireless Docking Station WLD15

To re-set to the default factory settings, first power off the docking station, press the re-set button for more than 2 seconds, and then power on the docking station.

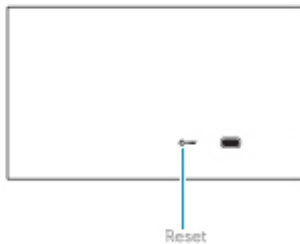




Figure 5. Reset

The Reset button is intended for recovering from undesired situations. It restores default parameters and the factory firmware version. The table below describes the reset button functionality:

| Function | Action | Effect |
|---------------------------------------|--|---|
| Parameters recovery | Long press (>2 sec) | Restores all parameters to factory defaults.  NOTE: The firmware version is not changed in this process. |
| Factory version recovery and defaults | Press during docking station power-up. | Restores factory-saved version. |

| Function | Action | Effect |
|----------|--------|--|
| | |  NOTE: This process will restore the firmware version, restore all default parameters, and delete all previously defined profiles. |

Connecting to the Intel Wireless Dock Manager

The Intel Wireless Dock Manager is an easy-to-use software which allows you to connect to the Dell Wireless Docking Station WLD15. The Wireless Dock Manager uses WiGig's WDE/WSE PAL leveraging the latest technology in transmitting the data wirelessly. Using this software you can enjoy wireless high-speed data, audio, and video transfer between your PC/laptop and the Dell Wireless Docking Station securely. This software supports WPS security pairing.

Once you establish a connection between your PC/laptop and the Dell Wireless Docking Station, all the devices like mouse, keyboard, stereo speakers, display devices, external hard drives, etc. attached to the dock are available to you. You can access them wirelessly using your PC/laptop. The Device Manager on your PC/laptop shows all the devices attached to the Dell Wireless Docking Station as if they are attached to your PC/laptop.

The following sections explain in detail how to configure the Intel Wireless Dock Manager software, connect to the Dell Wireless Docking Station, and use the devices attached to the docking station.

 **NOTE:** The Intel Wireless Dock Manager is pre-installed in your computer.

1. If WiGig disabled, user can choose one of the following method to enable WiGig.

- Go to system **Airplane mode** window, and then turn on WiGig device.
- Search for **Intel Wireless Dock Manager** and launch it. In **Intel Wireless Dock Manager** window, click **wireless settings**.

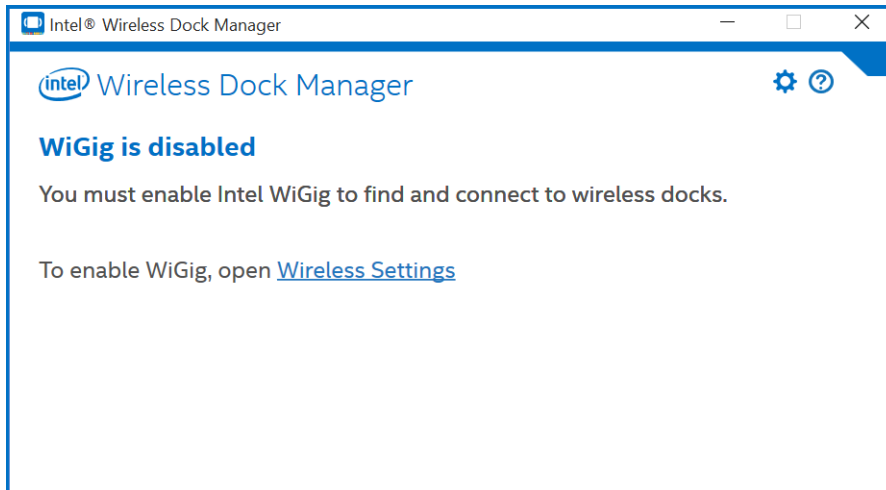


Figure 6. Intel Wireless Dock Manager window

2. You will be directed to **Airplane mode** window. And then slide the button to turn on WiGig.

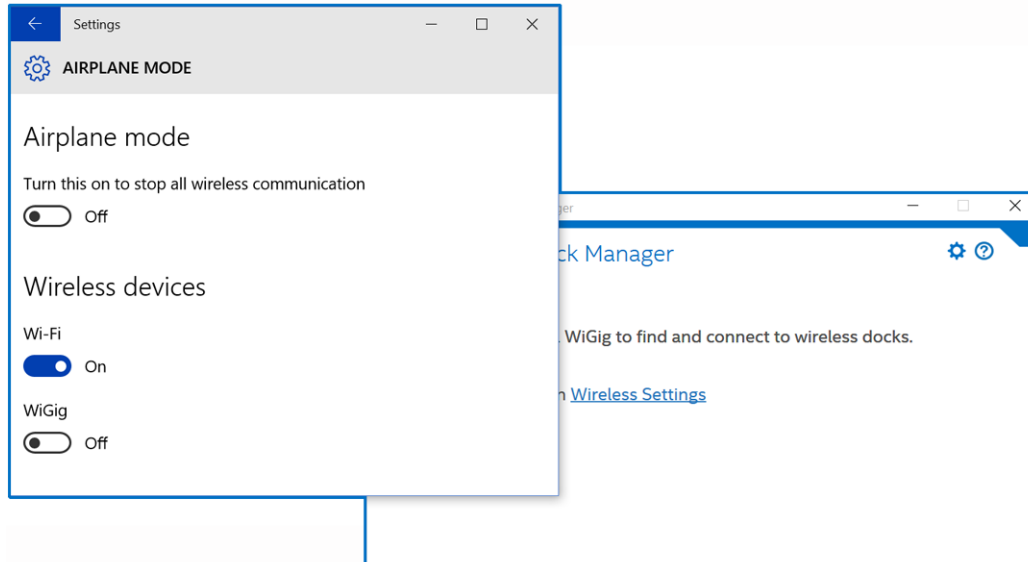


Figure 7. Turn on WiGig

4. Now the WiGig is turned on.

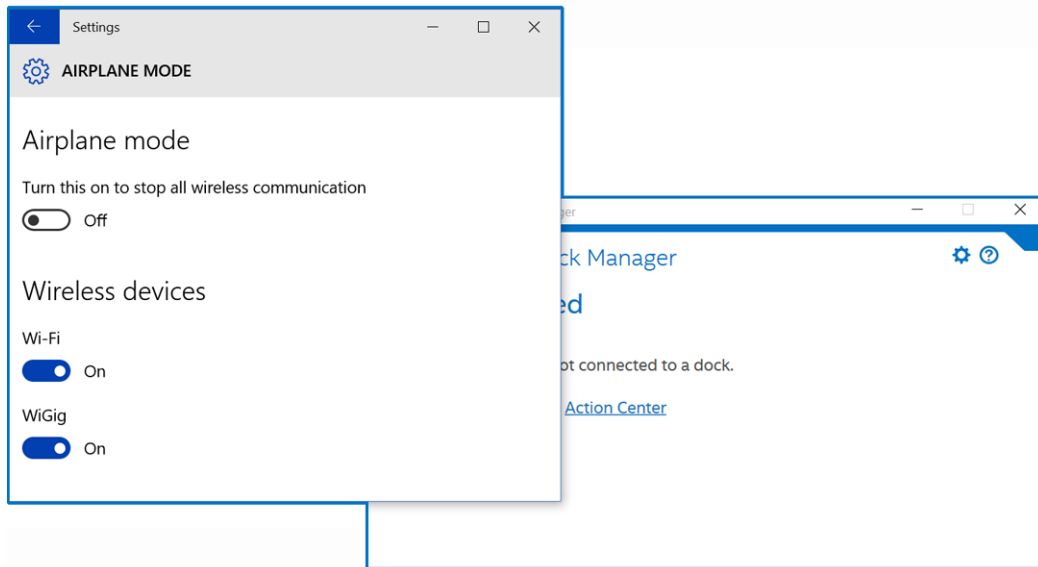


Figure 8. WiGig is turned on

5. To connect to the Wireless Docking Station, click **Action Center** in Intel Wireless Dock Manager window.

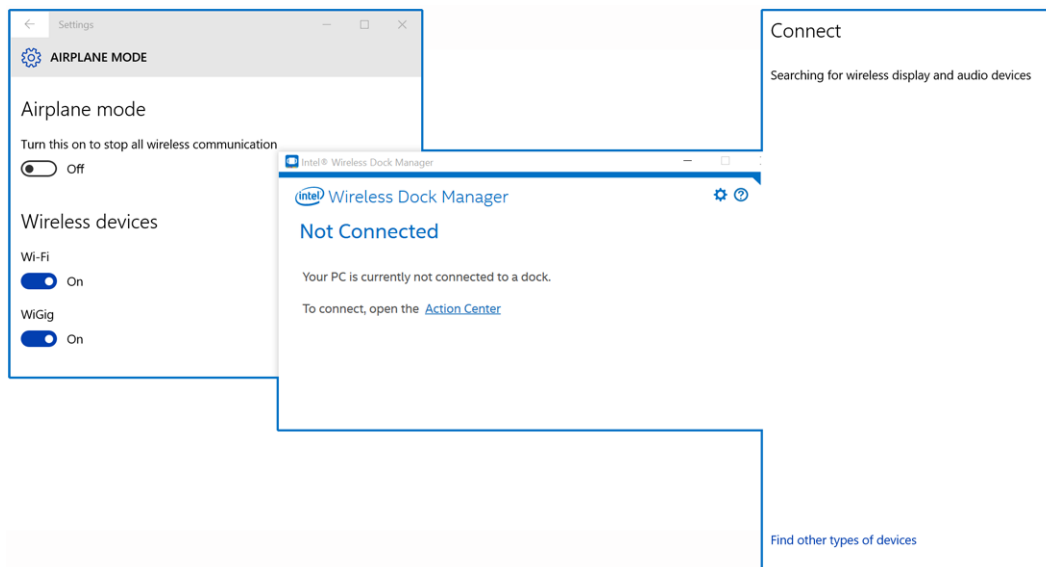


Figure 9. To connect to the wireless docking station

6. Select the dock you want to connect to.

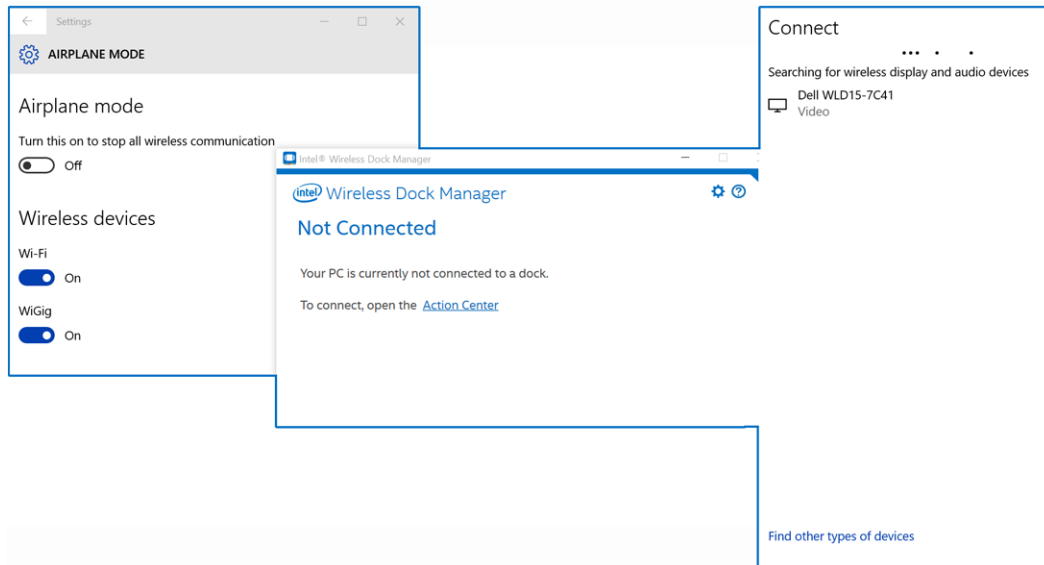


Figure 10. Select the dock you want to connect to

7. Press the pair button on the dock to connect to the wireless docking Station.

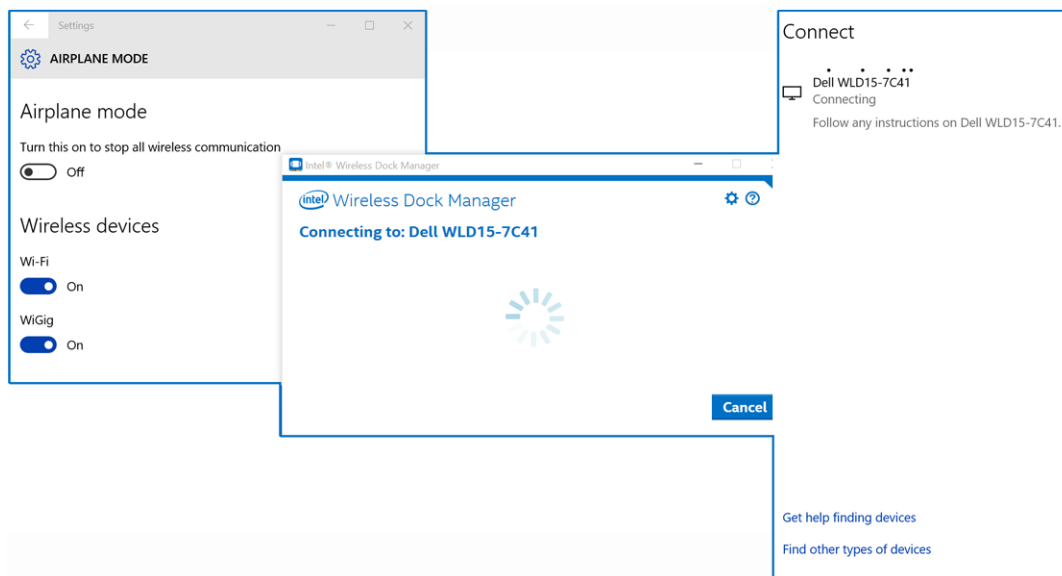


Figure 11. Connecting to the wireless docking station

8. You are now successfully connected to the Dell Wireless Docking Station WLD15.

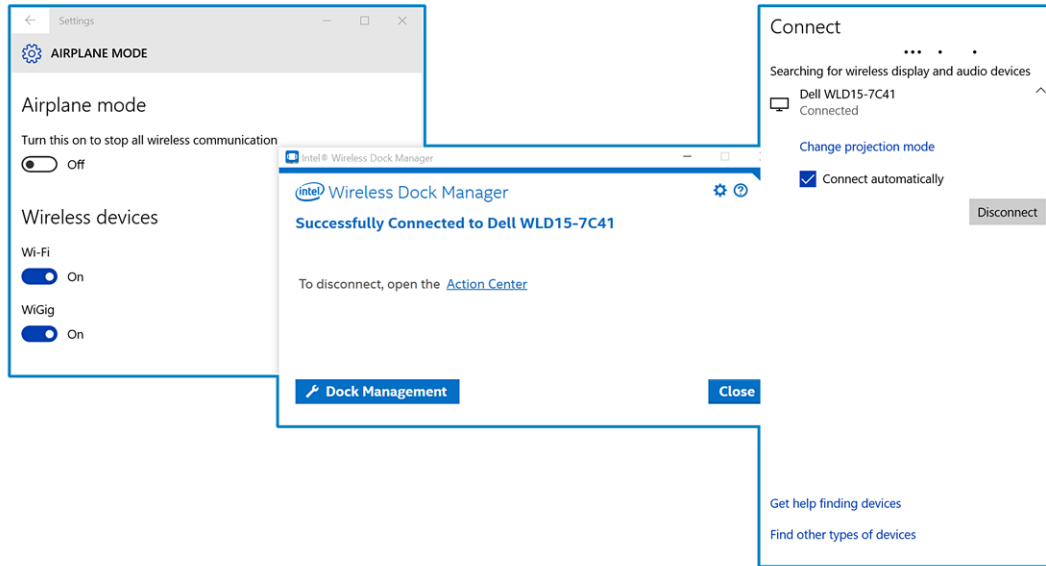


Figure 12. Successfully connected

9. You can also check in the box to automatically connect to this docking station on subsequent attempts.

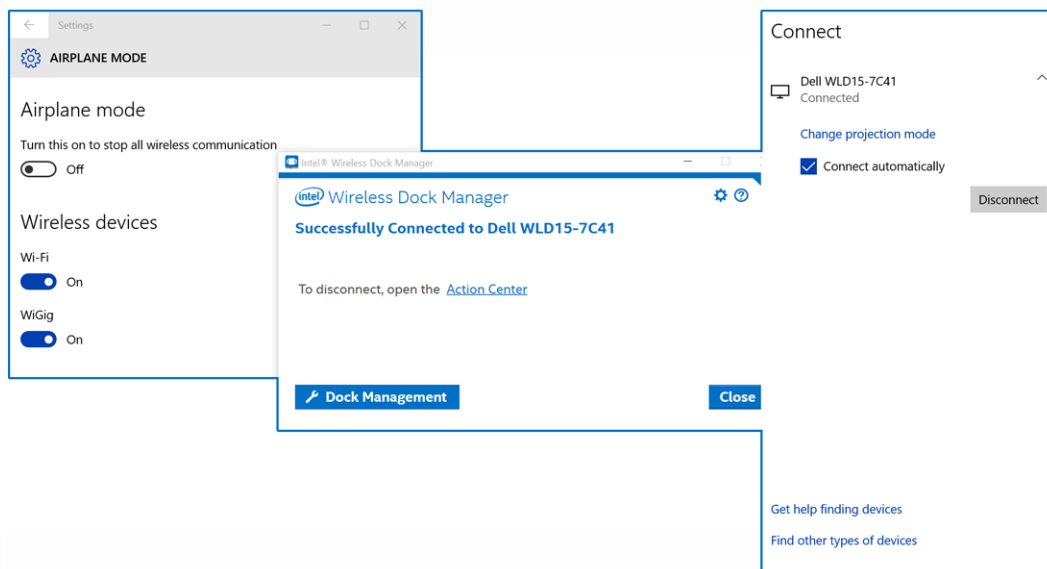


Figure 13. To connect automatically

10. If you do not wish to connect automatically on subsequent attempts, you can uncheck the box.

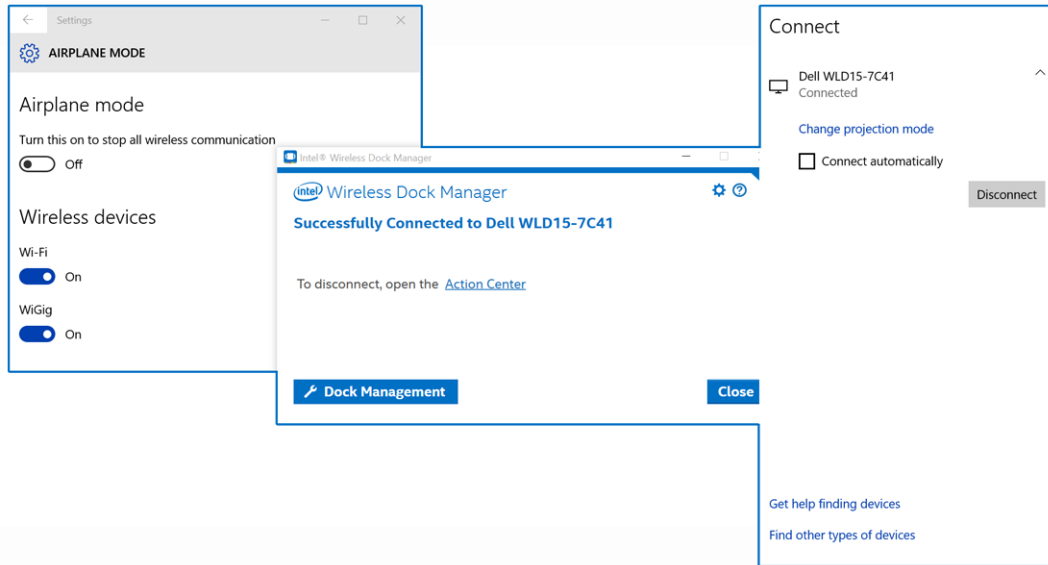


Figure 14. Choose not to connect automatically

11. Click **Change projection mode** to select the display modes.

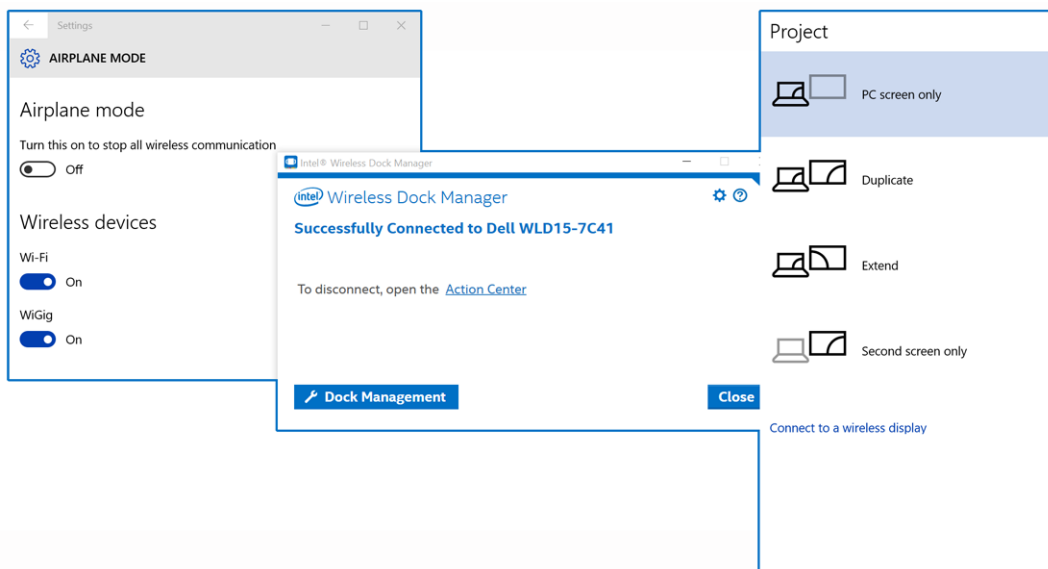


Figure 15. Display modes

12. Click the Dock Management tab to configure the Intel Wireless Dock Manager.

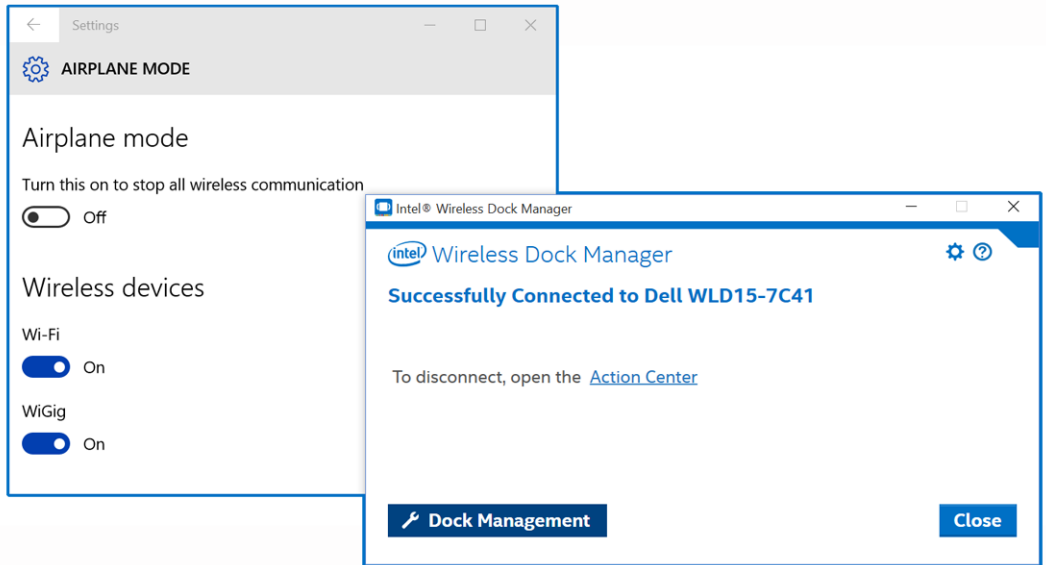


Figure 16. Dock Management

13. You can customize the Dock Access Settings to **Individual, Shared, or Public** connections. Selecting **Individual** allows automatic connections. After the initial pairing, every subsequent connection attempt will use pairing content from a stored profile.

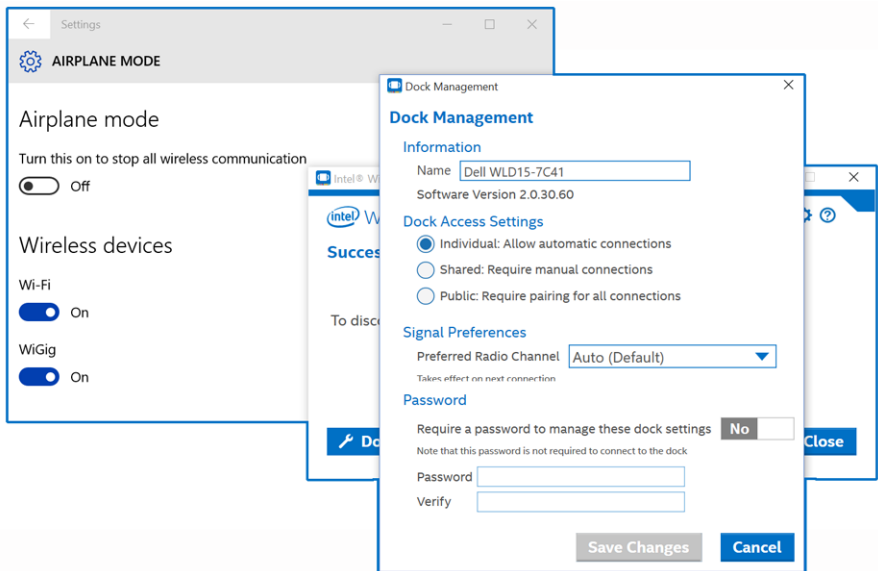


Figure 17. Dock Management — Individual

14. Selecting **Shared** will require you to manually select the target docking station from the scan list to connect. After the initial pairing, every subsequent connection attempt will use the pairing content from the stored profile.

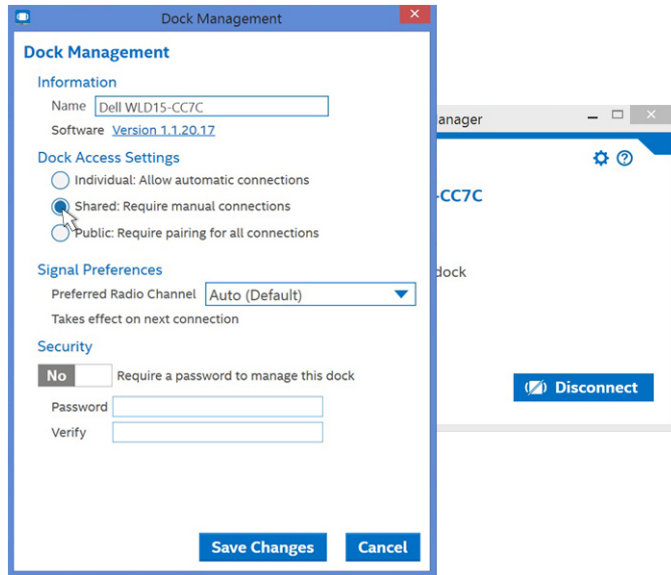


Figure 18. Dock Management - Shared

15. Selecting **Public** always requires the WPS pairing.

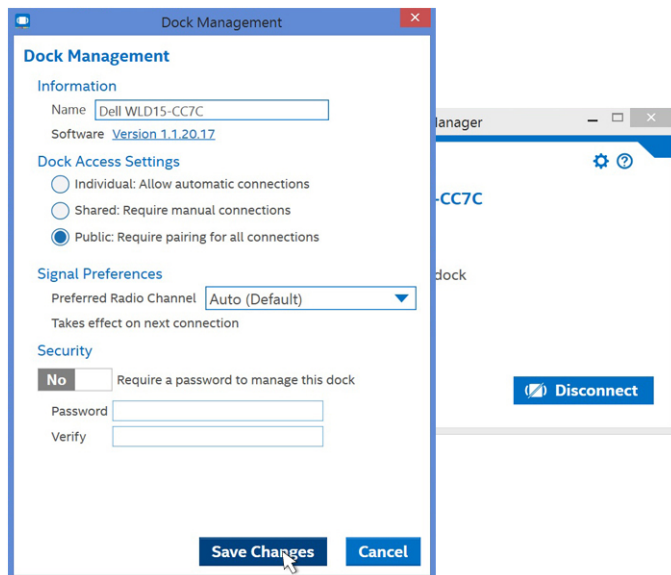


Figure 19. Dock Management - Public

You can also set a password to protect the docking station settings.

⚠ CAUTION: If you forget your password, then you have to do a roll-back to the full factory-default settings.

Configuring the Intel HD Graphics Utility

The Intel HD Graphics Utility allows you to configure multiple displays. You can connect two or more displays, but can only enable two active external displays simultaneously.

If connecting two displays, follow these steps:

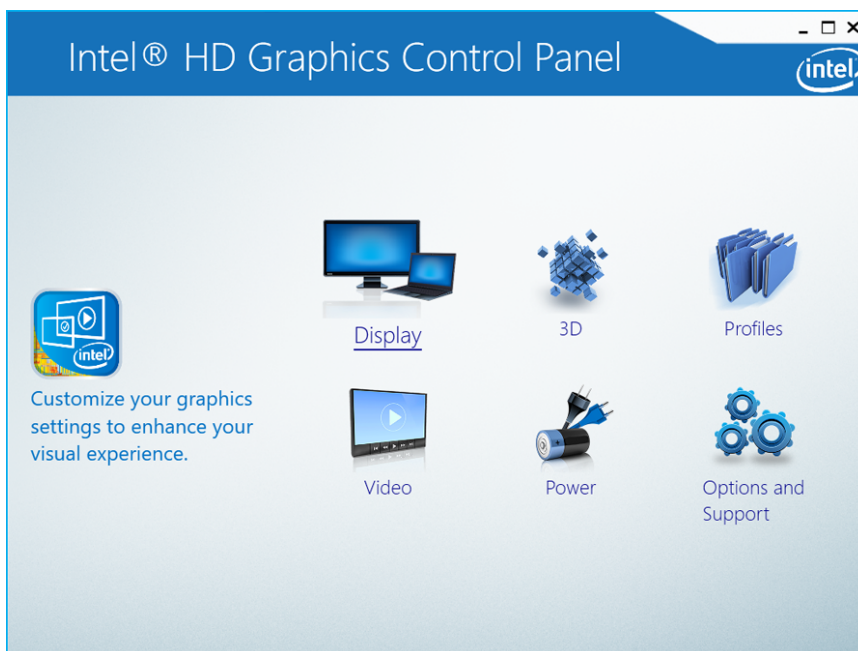
1. Click the icon list on the task bar. Click the Intel HD Graphics utility on your taskbar as shown here.



2. Click Graphics Properties.



3. Click Display.



4. Click Display and select Multiple Displays.



5. Select your preferred Display Mode.



If connecting three displays, follow these steps:

1. Click the **Intel HD Graphics Utility**.



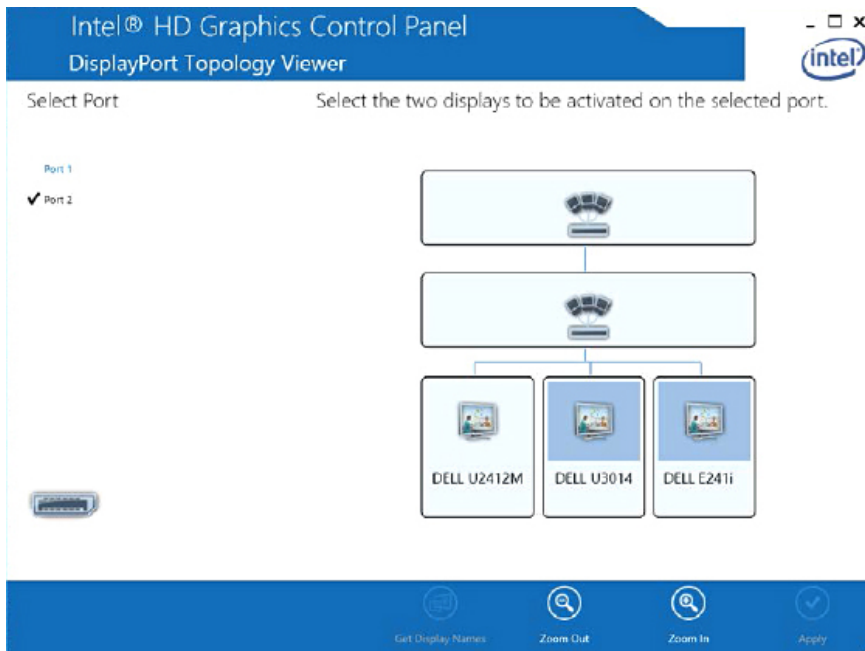
2. Select **DisplayPort Topology**.



3. Select **Port**.

Your monitors will be displayed.

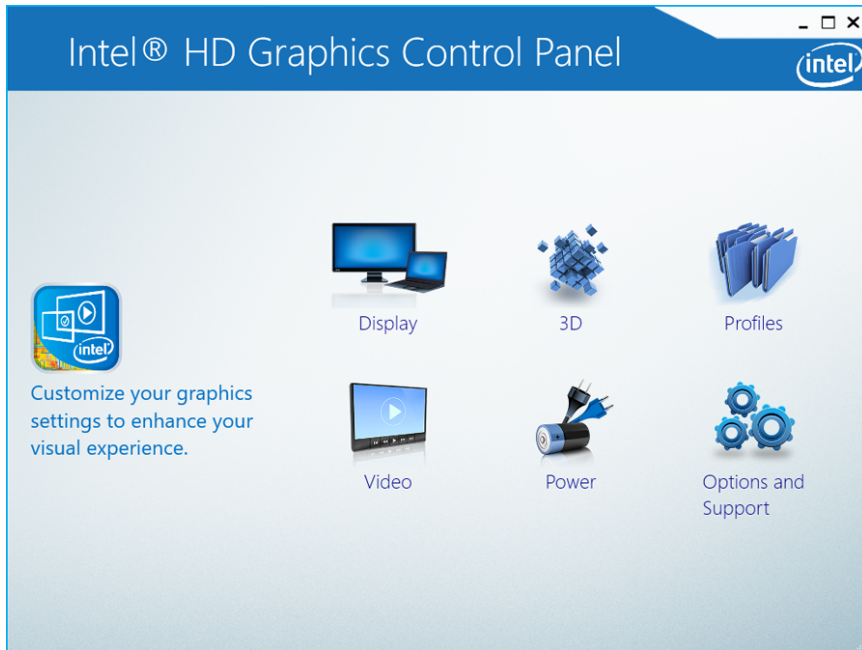
4. Click **Get Display Names**. Your monitors model numbers will be displayed. And select any two monitors and click **Apply**.



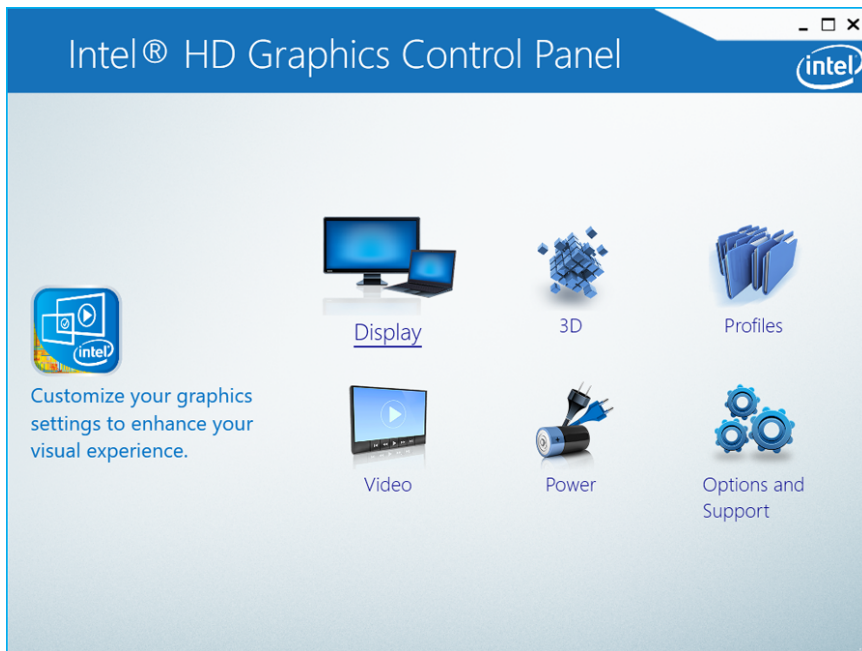
5. Click **Graphics Properties**.



6. The Intel HD Graphics Control Panel appears.



7. Select **Display**.




8. Select **Multiple Displays**. Select your preferred **Display Mode**.



9. Click **Apply**.



 **NOTE:** Go back to **General Settings** to configure each display's resolution. The maximum resolution for two active displays should not be higher than 1920 x 1200 or dependent on the display's supportable resolution. Please refer to the [Display Resolution table](#) in the Technical Specifications section of this user's guide.

Dell Wireless Docking Station Software Update

1. To install the **Dell Wireless Docking Station Software**, click **INSTALL**.



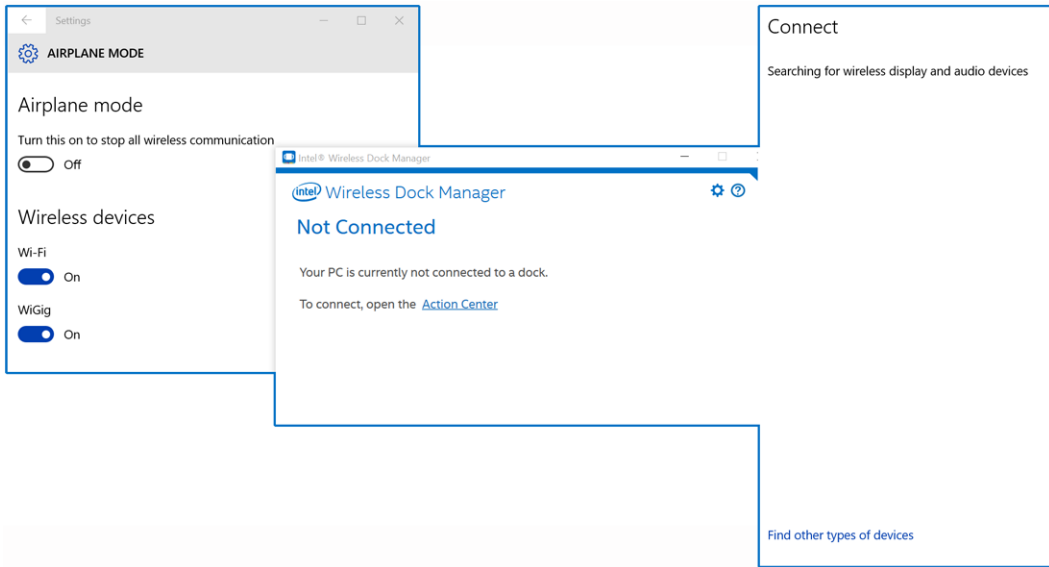
2. The **Wireless Dock Manager** dialog box indicates that the installation is in progress.



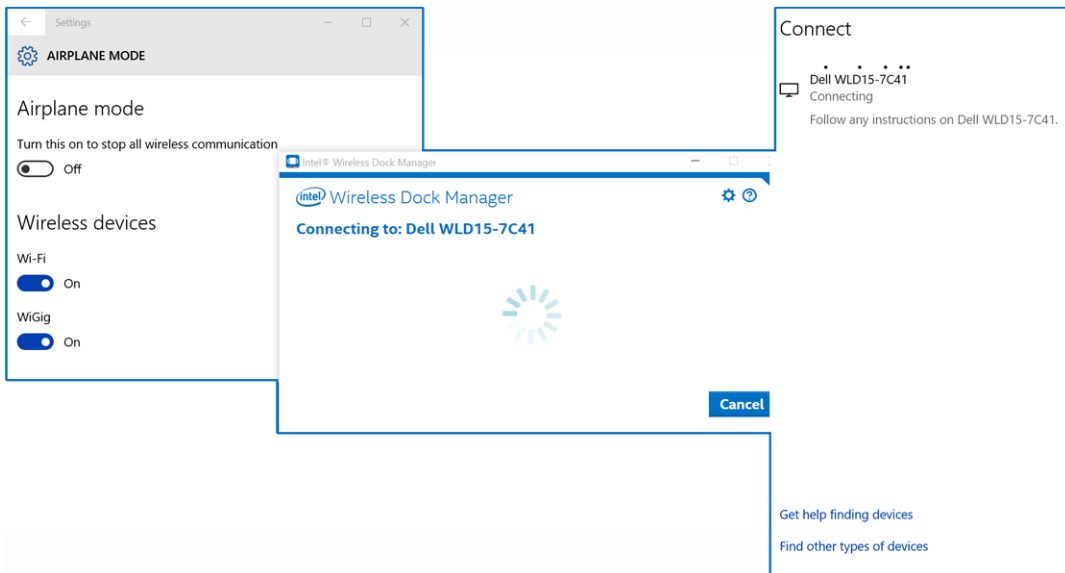
3. In the **Wireless Dock Manager** dialog box, click **Finish**. A message is displayed indicating that the software is successfully updated. Click **CLOSE**



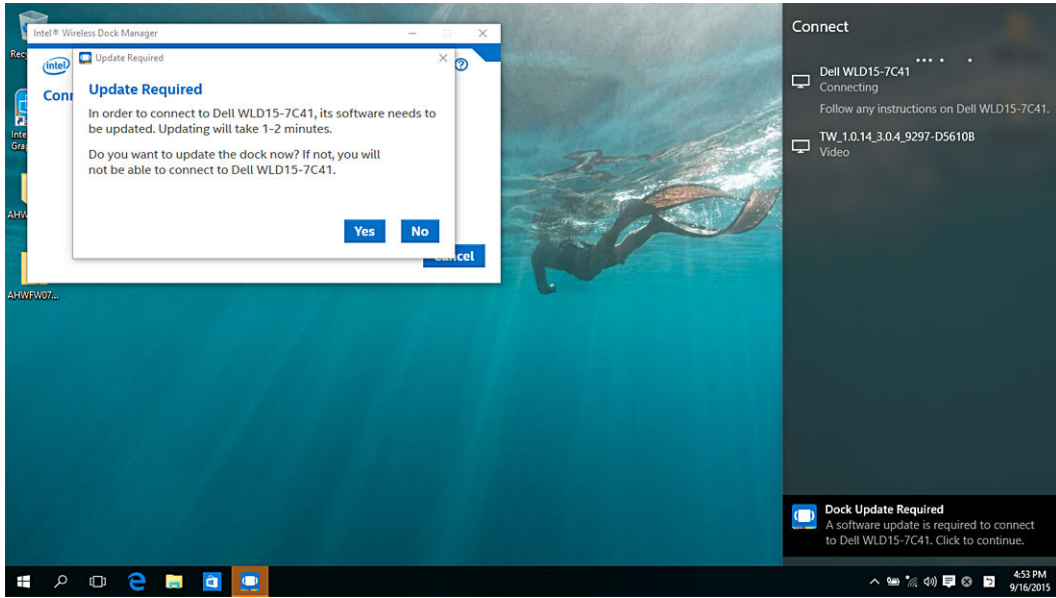
4. To connect to the wireless docking station, click **Action Center**.



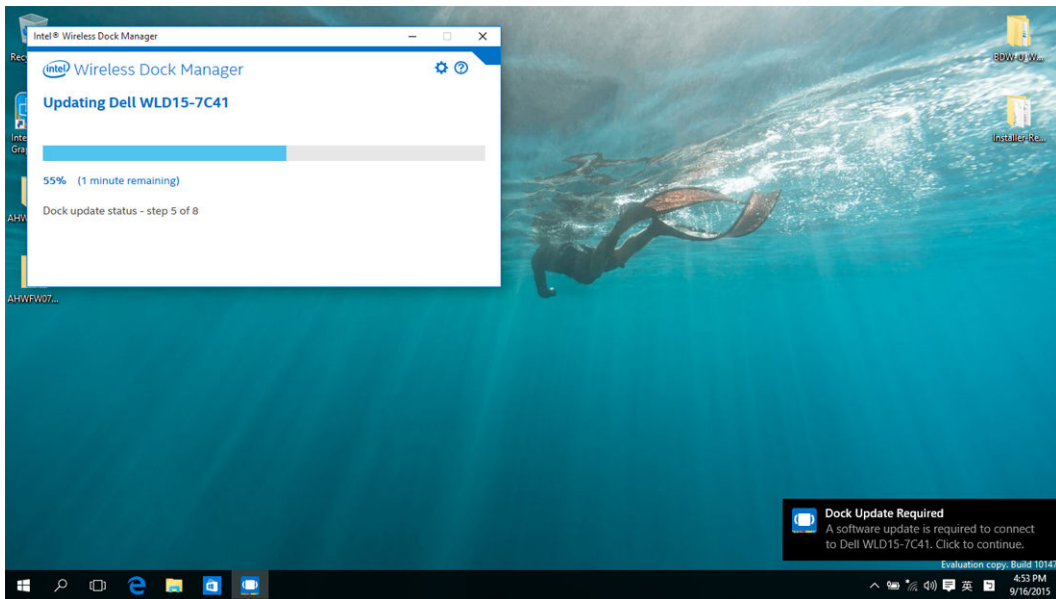
5. Connecting to the **Dell WLD15** docking station.



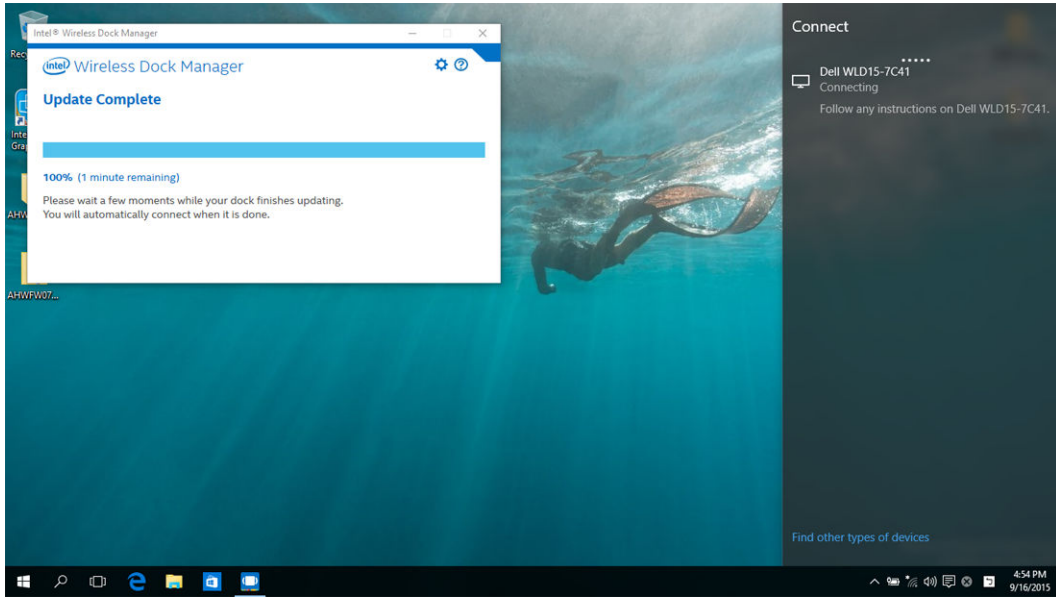
6. When you are connecting to the docking station, a message may be displayed asking whether or not you want to update the docking station firmware. Click **Yes**.



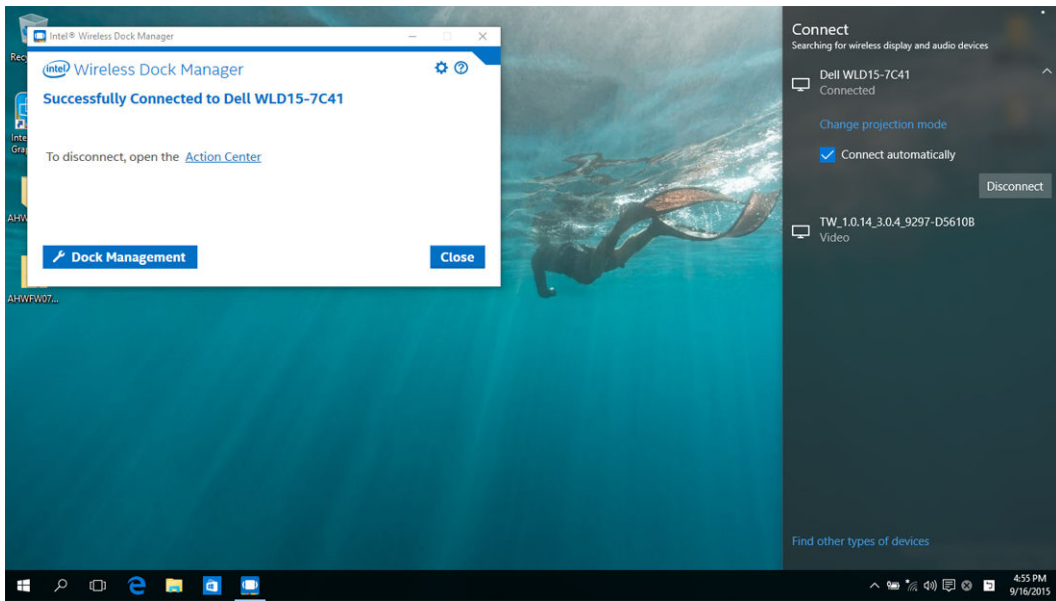
7. The Intel Wireless Dock Manager page indicates that the Dell WLD15 update is in progress.



8. The Intel Wireless Dock Manager page indicates that the Dell WLD15 update is complete.



9. You are now successfully connected to the Dell Wireless Docking Station WLD15.



Troubleshooting the Dell Wireless Docking Station WLD15

Symptoms and Solutions

| Symptoms | Suggested solutions |
|--|---|
| <p>1. No video on the monitors attached to the HDMI, miniDP port, or the VGA port on the wireless docking station.</p> | <ul style="list-style-type: none"> • Make sure the laptop is connected with the docking station to disconnect and reconnect to the docking station. • Make sure that the video cable attached to the panel is tightly secured to the video port in the docking station and that the monitor's display output setting is set to the correct output. • This may be due to the monitor(s) supporting higher resolutions than the WiGig connection is able to support. In the Intel Graphics Control Panel, under General Settings, ensure that the resolution is set to 1920 x 1200 or 1920 x 1080 at 59 Hz or 60 Hz for both the monitors. • If only one monitor is shown, while the other is not, go to the Intel Graphics Control Panel, and under Multiple Displays, select the output for the second monitor. • If three displays are plugged into the docking station, then the docking station will only support a maximum of two external monitors. Please refer to section in this User Guide which describes how to select and activate the desired monitors. • If your monitor is connected to a docking station, then the video output on your laptop may be disabled. Consult your laptop's user manual or contact your laptop manufacturer for assistance on enabling this feature. |
| <p>2. The video on the attached monitor is distorted or flickering.</p> | <ul style="list-style-type: none"> • Make sure the video cable attached to the panel is tightly secured to the video port in the docking station. • When the monitor is distorted or flickering, please reset your monitor to restore it to its original settings. You can reset the monitor by pressing the Menu button on the monitor itself, and selecting Restore Factory Settings. Or disconnect the monitor from your docking station and power off and on in order to reset. |

| Symptoms | Suggested solutions |
|--|--|
| 3. The video on the attached monitor is not displaying as an extended monitor. | <ul style="list-style-type: none"> • Make sure the Intel HD Graphics is installed in the Windows Device Manager. • Open the Intel HD Graphics Control Panel and go to Multiple Displays control to set the display to the extended mode. |
| 4. The audio connector is not functioning or there is a lag in the audio. | <ul style="list-style-type: none"> • Ensure the correct playback device is selected in the laptop. • The most likely cause of audio output problems on the docking station is a bad audio-out connector. First try powering off and then powering on the docking station. If that fails, try to re-plug in the audio cable to the docking station from the external speaker output. • Make sure the laptop is stationed closer to the docking station to avoid audio lag. Also, please update to the latest audio drivers. |
| 5. The USB ports are not functioning on the docking station. | <ul style="list-style-type: none"> • Make sure the laptop is connected with the docking station. Try to disconnect and reconnect again with the docking station. • Check the USB ports. Try plugging the USB device into another port. • Please check if the plugged device is shown in the Windows Device Manager. |
| 6. The HDCP content is not displayed on the attached monitor. | <ul style="list-style-type: none"> • Wireless docking station does not support HDCP content |
| 7. The LAN port is not functioning. | <ul style="list-style-type: none"> • Make sure the Ethernet cable connections are secured at the firewall and the hub or workstation. • Make sure the Realtek Gigabit Ethernet controller is installed in the Windows Device Manager. • Please re-install the Realtek Ethernet Driver or Dell Wireless Docking Software from Dell.com/support. |
| 8. The Wireless Dock Manager is not loading. | <ul style="list-style-type: none"> • Make sure the Intel Wireless Dock Manager is installed in the laptop or search for Intel Wireless Dock Manager program. • Device Manager should show Network Adapters – <ul style="list-style-type: none"> – Intel Tri-Band Wireless-AC 17625 • Device manager should show: Intel Wireless Gigabit 17625 Drivers - <ul style="list-style-type: none"> – Intel Wireless Gigabit 17625 Device Driver – Intel Wireless Gigabit 17625 User Mode Driver • Re-install the Dell Wireless Docking Software Pack from Dell.com/support. |

| Symptoms | Suggested solutions |
|--|--|
| 9. The WiGig connection is not established. | <ul style="list-style-type: none"> • If docking station is used, other users will not be able to find it or connect to it • If dock is not in used by another computer, you can check following items: <ul style="list-style-type: none"> – The docking station LED should display Amber color. – Bring the computer closer to the docking station and ensure nothing is in between the computer and the docking station. • The LED color should be white when a WiGig connection is established. • Dell Wireless Docking Software and driver pack may be outdated, download the latest driver pack from Dell.com/support |
| 10. Poor docking signal performance. | <ul style="list-style-type: none"> • Make sure there is a clear line-of-sight between laptop and docking station. • Bring computer closer to the docking station. • Make sure there is nothing blocking or is in between docking station and laptop. |
| 11. No docking connection in pre-OS environment. | <ul style="list-style-type: none"> • Docking station does not support pre-OS environment. |
| 12. Fan noise from docking station in disconnected mode. | <ul style="list-style-type: none"> • The docking station is constantly “listening” to computers who may wish to pair with it. The fan within the docking station will turn on occasionally to maintain temperature in the docking station. |
| 13. Dell Display Manager (DDM) monitor application not functioning with wireless docking station | <ul style="list-style-type: none"> • DDM application is not supported with current WiGig release solution. |

Technical specifications

Product Specifications

Docking Specifications

| | |
|---------------------|--|
| Standard | <ul style="list-style-type: none"> • Intel WiGig 2.0 • IEEE 802.11ad |
| Video Ports | <ul style="list-style-type: none"> • mini DisplayPort x 1 (supports DP 1.2) • HDMI x 1 (supports HDMI 1.4) • VGA Port x 1 |
| IO Ports | <ul style="list-style-type: none"> • Headset connector x 1 • Speaker out x 1 |
| Network Port | <ul style="list-style-type: none"> • 10/100/1000 M LAN Port x 1 |
| USB Ports | <ul style="list-style-type: none"> • 2 Front USB 3.0 Ports (one with PowerShare) • 1 Rear USB 3.0 Ports • 2 Rear USB 2.0 Ports |
| Buttons | <ul style="list-style-type: none"> • Pairing/Connect/Disconnect • Reset |
| LEDs | <ul style="list-style-type: none"> • Wireless status indicator <ul style="list-style-type: none"> – Search/Disconnected Mode - Amber – Connected Mode - White • Error: White and Amber • Pairing: Amber blinking • Firmware Upgrade: White blinking |

| | | |
|--|-------------------------|--|
| Environmental Characteristics | Temperature | Operating: 0 °C to 35 °C |
| | | Non-operating: <ul style="list-style-type: none"> • Storage: -20 °C to 60 °C (-4 °F to 140 °F) • Shipping: -20 °C to 60 °C (-4 °F to 140 °F) |
| | Humidity | Operating: 10% to 80% (non-condensing) |
| | | Non-operating: <ul style="list-style-type: none"> • Storage: 5% to 90% (non-condensing) • Shipping: 5% to 90% (non-condensing) |
| Power Adapter Input Voltage | AC 100~240 V | |
| Power Adapter Output Voltage | 19.5 V / 3.34 A | |
| Average Power Consumption | 4.384 W | |
| Network Standby Power Consumption | 5.8 W | |
| Dimension | 120 mm x 120 mm x 70 mm | |
| Weight | 363.42 g | |

Display Resolution Table

Table 3. Display Resolution Table

| No of video ports connected | VGA* | HDMI | MiniDP |
|-----------------------------|-----------------|-----------------|-----------------|
| Single | 2560 x 1600 p60 | Not connected | Not connected |
| Single | Not connected | 2560 x 1600 p60 | Not connected |
| Single | Not connected | Not connected | 2560 x 1600 p60 |
| Dual Display | 1920 x 1200 p60 | 1920 x 1200 p60 | Not connected |
| Dual Display | 1920 x 1200 p60 | Not connected | 1920 x 1200 p60 |
| Dual Display | Not connected | 1920 x 1200 p60 | 1920 x 1200 p60 |



NOTE: If higher resolution monitors are used, the Intel Graphics driver will make a judgement based on monitor specifications, available WiGig bandwidth, and display configurations. Some resolutions may not be supported and so will be removed from the Intel Graphics Media Control Panel.